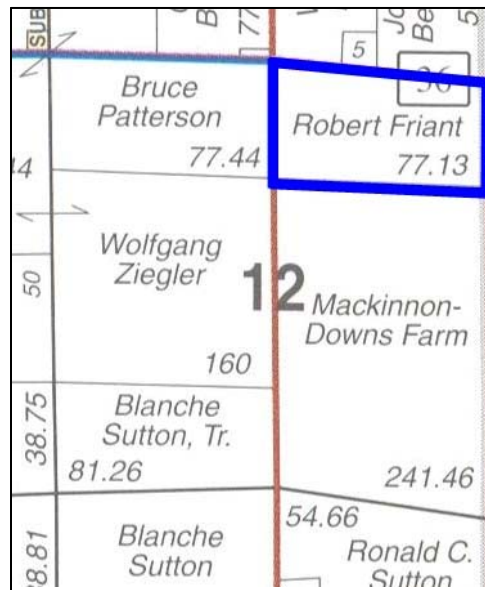


Friant Farm

McLean County - Illinois
77.14 acre tract at Randolph
(Section 12 T22N.R.2E.)



© 2006 Rockford Map Publs., Inc.

Reproduced with permission of Rockford Map Publishers, Inc., Rockford, Illinois



Mailing Address:
P.O. Box 67
Bloomington, IL 61702-0067

Office Location: 2231 West Market Street

Contact: Marty Thornton, Broker
Warren Basting, Broker
Frank Hill, Salesperson
Doug Greiner, Salesperson
Tim Woods, Salesperson

Phone: 309-662-4444 Toll Free: 888-897-2276 Fax: 309-828-2339